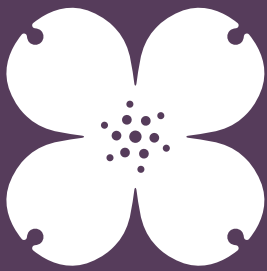


NORTH CAROLINA  
BOTANICAL  
GARDEN

# Annual Report

FY 2018





NORTH CAROLINA  
BOTANICAL  
GARDEN

DAMON WAITT *Director*

JOANNA MASSEY LELEKACS *Education*

LISA HICKS *Business Office*

CHARLOTTE JONES-ROE *Development*

JENNIFER PETERSON *Communications*

JOHNNY RANDALL *Conservation*

DAN STERN *Horticulture*

ALAN WEAKLEY *Herbarium*

Botanical Garden  
Foundation  
Officers

GREG FITCH *President*

MELISSA CAIN *Vice President*

CAREY DURHAM *Treasurer*

JENNY ROUTH *Secretary*

ON THE FRONT

*Lilium michauxii*  
Carolina Lily

ON THE BACK

*Lobelia puberula*  
Downy Lobelia

MISSION

*To inspire understanding,  
appreciation, and conservation of  
plants and to advance a sustainable  
relationship between  
people and nature.*

BY THE NUMBERS

| CATEGORY                                | 2017-18              |
|---|----------------------|
| <b>MEMBERS/DONORS</b>                   | 3,663                |
| <b>VOLUNTEERS</b>                       |                      |
| COMMUNITY VOLUNTEERS                    | 308 (8,909 hours)    |
| STUDENT VOLUNTEERS                      | 808 (3,687 hours)    |
| FACULTY/STAFF VOLUNTEERS                | 83 (362.75 hours)    |
| TOTAL VOLUNTEERS                        | 1,199 (12,959 hours) |
| VALUE OF VOLUNTEER TIME @ 24.14/hour    | \$312,830            |
| <b>COMMUNICATIONS</b>                   |                      |
| E-NEWSLETTER SUBSCRIBERS                | 11,807               |
| FACEBOOK FOLLOWERS                      | 7,529                |
| TWITTER FOLLOWERS                       | 1,584                |
| INSTAGRAM FOLLOWERS                     | 2,424                |
| <b>EDUCATION and OUTREACH</b>           |                      |
| ADULT PROGRAMS                          | 98                   |
| ADULT TOURS                             | 54                   |
| YOUTH & FAMILY PROGRAMS                 | 40                   |
| SCHOOL PROGRAMS                         | 45                   |
| HORTICULTURAL THERAPY SESSIONS          | 290                  |
| WONDER CONNECTION PARTICIPANTS          | 1,538                |
| CAROLINA CAMPUS COMMUNITY GARDEN        | 6,391 lbs.           |
| EDIBLE CAMPUS STUDENT VOLUNTEER HOURS   | 1,290                |
| <b>HORTICULTURE</b>                     |                      |
| PLANT SALE REVENUE                      | \$84,819             |
| PLANTS SOLD                             | 10,460               |
| SEED PACKETS DISTRIBUTED                | 8,425                |
| GREEN GARDENER INQUIRIES                | 277                  |
| <b>RESEARCH</b>                         |                      |
| NUMBER OF SPECIES SEED BANKED           | 21                   |
| SEEDS COLLECTED                         | 381,500              |
| HERBARIUM SPECIMENS ACCESSIONED         | 7,136                |
| HERBARIUM SPECIMENS LOANED              | 2,152                |
| HERBARIUM-RELATED PUBLICATIONS          | 14                   |
| SCIENTIFIC (PEER-REVIEWED) PUBLICATIONS | 19                   |
| SCIENTIFIC PRESENTATIONS                | 25                   |
| LIBRARY ACCESSIONS                      | 557                  |
| GRANTS & CONTRACTS                      | 15                   |
| <b>UNIVERSITY SERVICE</b>               |                      |
| COURSES TAUGHT                          | 3 (81 undergrads)    |
| GRADUATE COMMITTEES                     | 9 (6 chaired)        |
| GUEST LECTURES                          | 13                   |
| UNC COURSES USING GARDEN                | 43                   |
| STUDENT INTERNSHIPS                     | 22                   |
| WORK-STUDY STUDENTS                     | 66                   |

# Hitting our stride...

BY DAMON WAITT, NCBG DIRECTOR

Dear Friend of the North Carolina Botanical Garden,

As the calendar year draws to a close, we are pleased to share the Garden's once yearly accounting of accomplishments for the fiscal year ending June 30, 2018. Our achievements reside not only in our extensive collections, educational initiatives, and research endeavors, but in our mission to "inspire understanding, appreciation and conservation of plants and advance a sustainable relationship between people and nature." From our role in saving rare plants from extinction to our educational outreach that brings people and nature closer together, we act in every way to advance the University's mission of teaching, research, and public service and to enhance the well-being of our broader community.

The Garden received an unprecedented outpouring of support by members and friends in FY18. Thanks to another record-setting year for general support, we ended the year with a reserve of \$26,496. This generosity allowed us to carry out several Garden improvements, including a renovation of the Peacock Discovery Room into a hands-on, indoor space for families with children to learn about and explore nature.

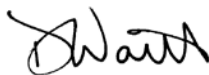
Meanwhile, continued development of the Garden's plant information resources has yielded several contracts for mini-floras, and a new Timber Press publication, *Wildflowers of the Atlantic Southeast*, will come out next spring. The addition of a collections manager to the

Garden staff will increase our capacity to develop our plant information resources and offer them to new and broader audiences.

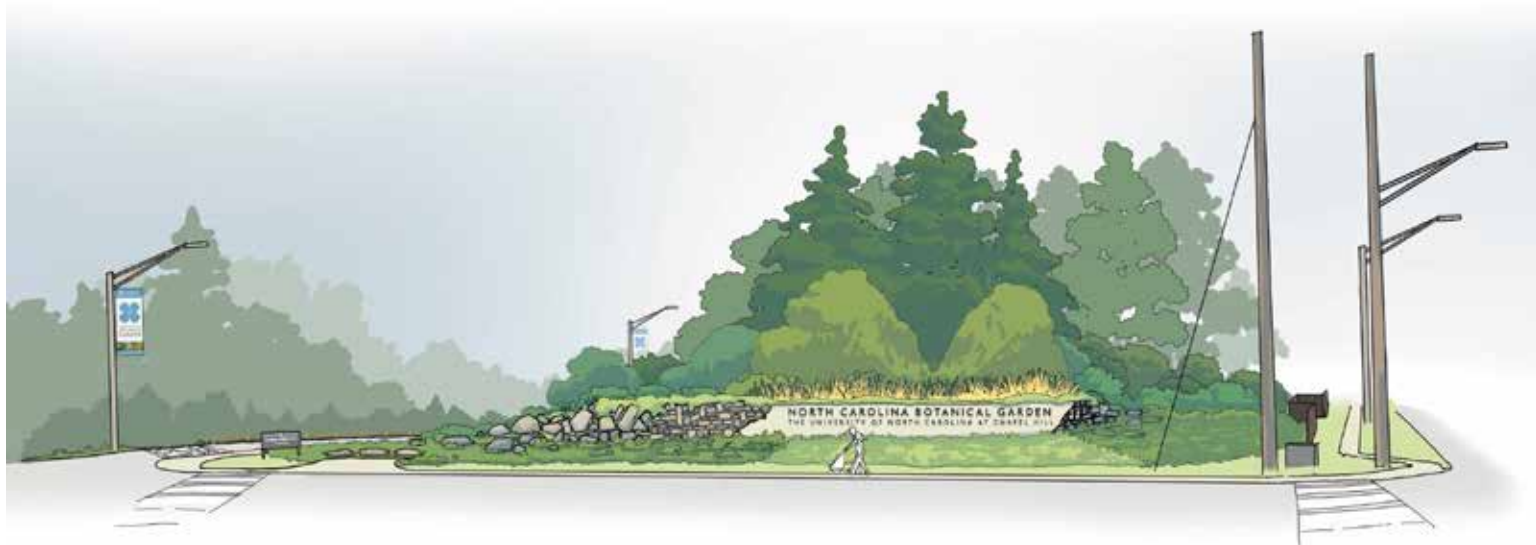
We are especially excited about continued progress on select aspects of the entranceway plan such as the addition of split rail fencing in the parking lot, vegetation removal from the picnic area and retention pond, and new signage at the entrance kiosk leading into the Garden. A new sign and landscape design for the corner of Fordham Boulevard and Old Mason Farm Road will enhance the Garden's street presence on Highway 15/501.

I hope you enjoy reading about the wonderful achievements of our programs and staff as much as we have enjoyed bringing them to fruition. We could not do all the wonderful things we do without the generosity and support of staff, volunteers, and friends like you. Last year's annual report introductory letter ended with "Buckle up, it is going to be an exciting ride". This year's letter ends with "Eyes and minds open, we are hitting our stride".

Sincerely Yours,



Damon Waitt



Proposed entrance to the North Carolina Botanical Garden. Illustration by LIFT Environmental Design.

# Conservation

## HIGHLIGHTS

Our conservation program protects and manages land and conducts and applies research in ecological restoration and germplasm storage. As a founding member of both the Center for Plant Conservation (CPC) and Seeds of Success Program, the Garden holds genetic resources of both rare and common plants.

### Rare and Endangered Plants

We store the germplasm of 82 endangered southeastern species for use in restoration and as a last resort against extinction in the wild. This year, 75 rare plant populations were monitored, two peer-reviewed journal articles were published, and 12 presentations were delivered at professional conferences.

Our most ambitious projects in FY18 include collecting over 346,000 seeds of nectar and/or host plants for restoration projects and monitoring nearly all *Helianthus schweinitzii* (Schweinitz's sunflower) in the Uwharrie National Forest with U.S. Forest Service funding.

We also collected over 50,000 *Dionaea muscipula* (Venus flytrap) seeds from 40 populations, tissue for genetic research from 47, and status surveys on 63 populations. Seeds will be used for targeted restoration and long-term conservation, and the tissue will help determine the genetic diversity within and between flytrap populations with funding from the International Carnivorous Plant Society.

### Land Conservation and Management

The conservation program oversees 1,125 acres, including seven nature preserves and 23 conservation easements. We used controlled burning

to manage 50 acres of Piedmont savanna habitat, "prescribed" mowing in 30 acres of wet meadows, and invasive plant species removal across hundreds of acres at the Mason Farm Biological Reserve, Battle Park, and the Coker Pinetum. We accomplished this active management with the help of work-study students, student interns, volunteers, and interagency cooperation.

We administered a Green Growth Toolbox project with a N.C. Wildlife Resources grant to create a four-county conservation plan that will show where critical corridors are needed to create connections between and among conservation lands. The final project will be part of an environmental summit hosted by the Garden in the spring of 2019.

After many years of effort, we are able to purchase a 13-acre tract of ecologically exceptional land adjacent to our Parker Preserve and contiguous nature preserves, with funding from Orange County, the Town of Chapel Hill, private citizens, and the N.C. Clean Water Management Trust Fund.

### Public Outreach and Professional Activities

Conservation staff gave 22 public presentations at national scientific meetings, local conservation events, public school classes, garden clubs, and others. The department also led workshops and taught classes in the NCBG Native Plant Studies certificate program through the education department by teaching Conservation Biology, Pollination Biology, Local Flora, and Invasive Plant Control.

*Staff collect Venus flytrap seeds to be used for targeted restoration and long-term conservation.*



# Education

## HIGHLIGHTS

The education department of the North Carolina Botanical Garden provides diverse, creative learning experiences that seek to inspire understanding, appreciation, and conservation of plants and advance a sustainable relationship between people and nature.

Free and fee-based public adult programs were offered throughout the year, supporting the NCBG mission in areas of nature studies, nature art and illustration, home gardening, hikes and tours, and special events. These public offerings served more than 3,400 people and included programs on seed saving, sustainable gardening practices, citizen science, plant identification and taxonomy, and more. Our certificate programs in Native Plant Studies and Botanical Art and Illustration provided 176 participants an opportunity to learn subject matter in depth.

Youth and family focused programs served more than 2,700 people through curriculum-aligned school field trips, Garden Guide and educator trainings, early childhood classes, summer camp, family workshops and hikes, and special events. These programs provide hands-on interactions promoting the importance of nature in child development, inspiring observation, appreciation, and understanding of the natural world, and delivering excellence in natural science education. The Children's Wonder Garden continues to provide opportunities for outdoor nature play and exploration to visiting families.



### Exhibits

The Pegg Exhibit Hall featured *Saving Our Seeds*, which served as a theme for a four-month series of 36 lectures, workshops, classes, and other activities highlighting the importance of seeds through science, culture, and conservation.

The DeBerry Art Gallery hosted six two-month exhibitions of two-dimensional works of nature portraits or natural landscape subjects by North Carolina artists. The 29th *Sculpture in the Garden* exhibition showcased 41 original works of 27 artists providing new opportunities for viewing nature and art through their combined presence in the Garden.

### Annual Lecture Series

Our two long-standing annual lecture series, the Jenny Elder Fitch Memorial Lecture and the Evelyn McNeill Sims Native Plant Lecture, were well attended. The former was paired with the *Saving Our Seeds* theme. It featured Teri Dunn Chace, writer and editor, who took us on a tour of seeds – what they look like, what they do, and how they do it. The latter featured John Harris, director of the Monadnock Institute of Nature, Place and Culture at Franklin Pierce University, who shared highlights from his spring journey following in the footsteps of other noted naturalist authors of the past century, through wild places from the Everglades to Mount Washington.

### Outreach Programs

In addition to our education programs that bring people to the Garden and the land we steward, we also serve our community through a variety of outreach activities.

Our Horticultural Therapy program trained 13 student interns and educators in the theory and practice of therapeutic horticulture and provided 160 direct services sessions.

The Carolina Campus Community Garden grew 6,391 pounds of organic vegetables for UNC-Chapel Hill's lowest-paid employees and partnered with 13 UNC classes.

Wonder Connection provided 839 educational programs for chronically-ill children at N.C. Children's Hospital and 17 outpatient events for families at the Ronald McDonald House. This outreach program was also the recipient of the American Public Gardens Association 2018 Program Excellence Award.

Edible Campus promoted interactive food education across the University landscape by creating vibrant public spaces involving 1,290 student hours of engagement and 23 student organizations and classes.

*Bluets enjoy a weekly nature workshop at the Garden.*

# Herbarium

## HIGHLIGHTS

The UNC Herbarium is the largest collection of plant specimens in the Southeast with over 800,000 specimens dating from the mid-1800s, housed in Coker Hall at the University of North Carolina at Chapel Hill. The Herbarium documents plants in the state's 100 counties and across the southeastern United States, serving as the definitive resource for their identification and geographic distribution. The Herbarium strives to increase botanical capacity by bringing botanical knowledge and skills to people at all levels of experience.

The Herbarium accessioned 7,136 new specimens into the collection this year. Over 5,000 of those were to our algae collection. We also loaned out 2,152 specimens to researchers and herbaria around the world.

### Bringing Plant Records to the Digital World

This year, the Herbarium received a fourth National Science Foundation grant towards records digitization, this one focused on fossils and ferns. In FY18, over 97,000 images were taken of specimens in our vascular plant collection, making this botanical data accessible to a much broader audience. Thanks to crowd-sourcing projects at Notes from Nature, volunteers around the world joined in the effort and transcribed label data for 7,436 specimens in four plant families – Campanulaceae (bellflower family), Malvaceae (mallow family), Adoxaceae (moschatel family), and Betulaceae (birch family).

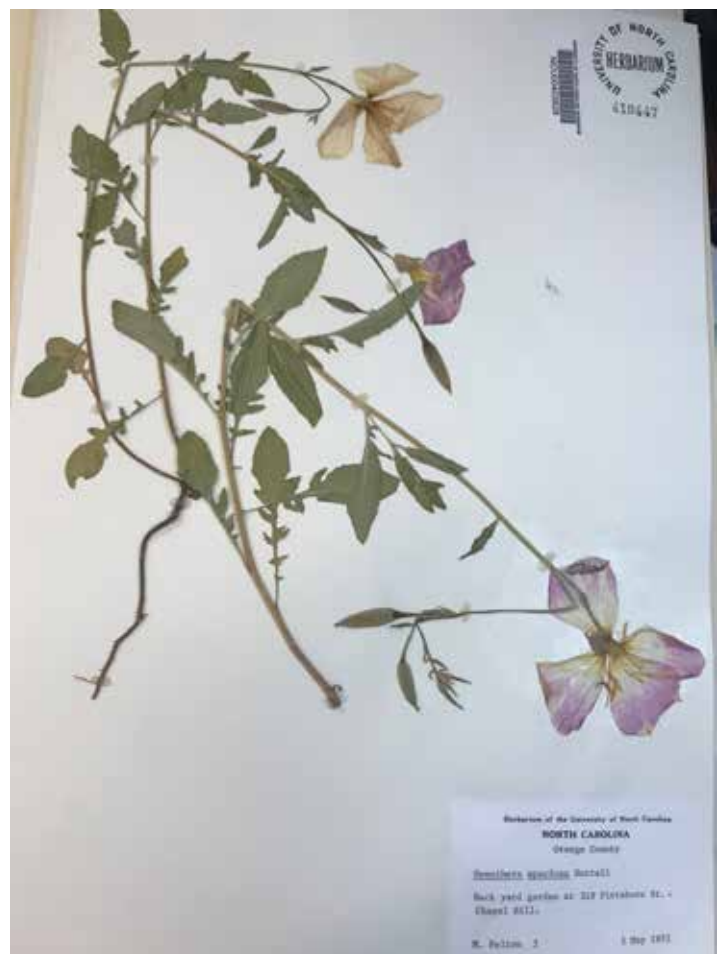
### Outreach: Curing Plant Blindness

Plants support all of human existence, but most people know little about the botanical world surrounding them. At the Herbarium, we strive to cure plant blindness through outreach to broad audiences at all levels of expertise. We continue to update the comprehensive *Flora of the Unglaciated Southeastern United States*, available online for use by scientists, educators, conservationists, and the interested public. We've also launched a series of plant identification tools designed to reach anyone interested in learning about plants, regardless of their level of training. This begins with the *Flora* but includes websites, smartphone apps, and the *Wildflowers of the Atlantic Southeast* field guide to be published by Timber Press in spring 2019. This handy, illustrated guide uses a simple key system to guide users to the identification of over 1,200 species of wildflowers found in the Atlantic Southeast. Additionally, the Herbarium has produced custom floras for the state of Arkansas, which has never before had a state flora, and Shenandoah National Park in Virginia.



*Herbarium director Alan Weakley studies one of the 800,000+ specimens housed in Coker Hall.*

*Below: Herbarium specimen collected by Herbarium assistant curator Mary McKee Felton (1917-2001).*



# Horticulture

## HIGHLIGHTS

The Garden's horticulture department is a leading source of information and expertise on the plants of North Carolina and the southeastern United States. This department is responsible for the management and care of 12 acres of thematic gardens at 100 Old Mason Farm Road, which include a variety of habitat collections and ornamental displays of native species and their cultivars. The horticulture department also manages the five-acre Coker Arboretum, an over 100-year-old collection of southeastern trees and their Asian relatives in the center of the UNC-Chapel Hill campus.

### Projects

The past year saw several substantial improvements to our back-of-house horticulture facilities and operations. We constructed a loading ramp from reclaimed concrete slabs that enables staff, volunteers, and work-study students to unload garden debris more efficiently by rolling garden carts right into the bed of our dump truck. With the help of volunteers, we built a retaining wall along the downhill edge of our new greenhouse to safeguard it from erosion and add several hundred square feet of level, sunny, southern exposure space to our nursery.

We have made significant progress on several renovations that will improve the visitor experience. We developed a concept plan for a new entranceway sign and landscape on Old Mason Farm Road and improved plantings outside the sound wall along Fordham

Boulevard. We began installing a split rail fence to define the edges of our entrance drive, visitor parking, and picnic area. By completing renovations to the Perennial Circle lawn and carnivorous plant beds, we have enhanced our horticultural displays and rejuvenated our collections.

To further extend the reach of the Garden's mission, we collaborated with our neighbors at the Chapel Hill Public Library to design and install a 1,000-square-foot pollinator garden right by their main building, full of native plants purchased from the Garden.

### Presentations

In the past year, the horticulture department has continued to support the Garden's education mission by giving talks and teaching classes about native plant propagation and gardening with native plants to support pollinators. Two members of our staff attended a symposium on native plants and plant conservation sponsored by the American Public Gardens Association, while another attended a native plant conference hosted by the Birmingham Botanical Gardens. Two staff members participated in a training about how the Garden can contribute to the early detection of serious plant pests and diseases as a member of the Sentinel Plant Network.

*Our diverse collection of carnivorous plants bask in refreshed beds.*



# Development

## HIGHLIGHTS

The Garden had a successful fundraising year in FY18, with unprecedented growth in membership, accomplishment of all fundraising goals, and increases in permanent endowments that will help provide support in future years. In FY18 the Garden received \$560,255 (103 percent of our \$545,000 goal) in unrestricted gifts, including Botanical Garden Foundation dues, contributions to the Director's Fund, event sponsorships, and unrestricted memorial gifts and tributes.

We received \$1,318,686, or 110 percent, of our \$1.2 million goal in private contributions to all Garden designations.

Planned gifts continue to be a significant source of support. We received five planned gifts from individuals who included the North Carolina Botanical Garden in their wills or other estate plans. From these legacy gifts we were honored to receive \$107,169 for general support and \$78,524 designated for particular projects such as the new Herbarium building and increasing permanent endowments for Coker Arboretum (\$104,506) and Mason Farm Biological Reserve (\$26,981).

### Fundraising

Cash and commitments, including formal pledges and documented planned gifts, totaled \$4,783,799 this year. With \$16,585,409 in gifts and commitments recorded from January 1, 2015 through June 30, 2018, the Garden is 55 percent of the way to our \$30 million goal for the eight-year UNC capital campaign.

### Membership

Garden membership grew to an unprecedented level in FY18. Increased membership appeals, acquisition mailings, improvements in our renewal reminder system, and stewardship focused on donor retention helped the Garden's membership roster grow to 3,663, up seven percent from the previous fiscal year. Membership dues provide more than \$150,000 for general support and are tremendously helpful in meeting the Garden's needs. We have continued to build a base of engaged members who are committed to our work and mission. Healthy membership growth is the best way to ensure future financial support and the continued progress of the North Carolina Botanical Garden.

### Endowments

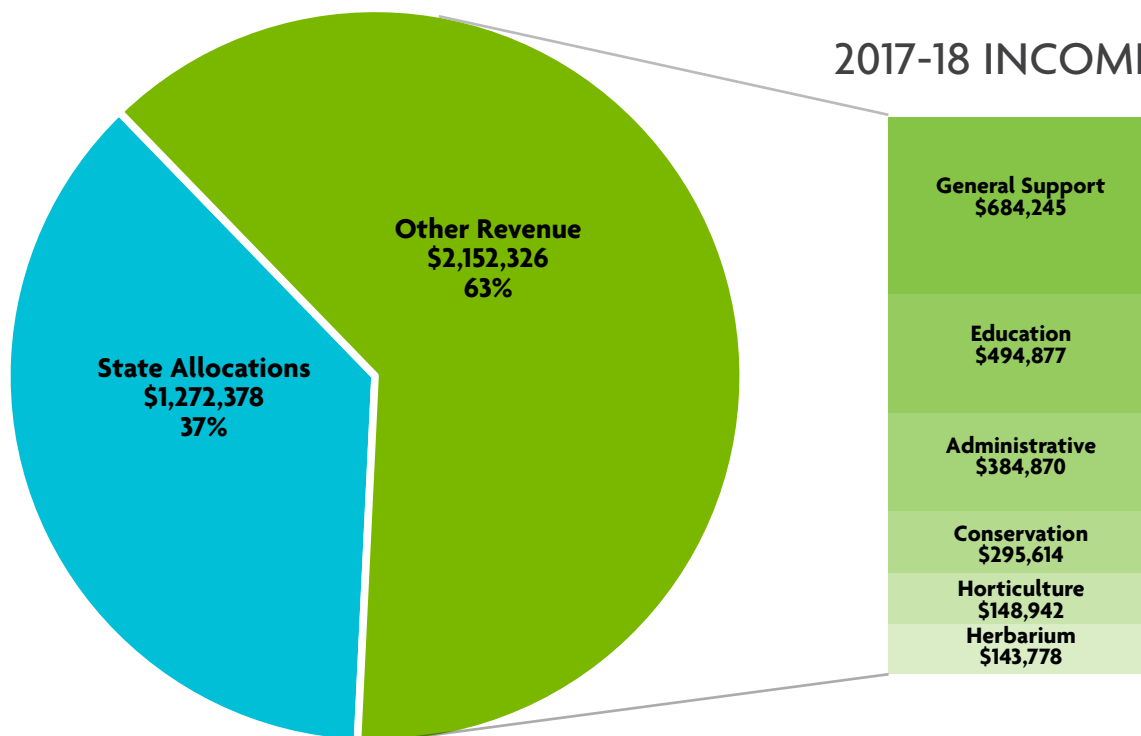
Additions to permanent endowments for specific areas of the Garden totaled \$216,192 in FY18. These additions, plus growth of invested assets, brought the total market value of permanent endowments and other large invested funds to \$4.8 million and is expected to generate more than \$230,000 next year. These permanent sources of income are critical for ongoing care of campus treasures like Coker Arboretum, Battle Park, and Mason Farm Biological Reserve. Because state allocations provide only 30-40 percent of the Garden's budget, and because fundraising can vary with the economic climate, having permanent sources of recurring annual income is vital to the Garden's future.

| <b>FUND TYPE</b>                | <b>FY18 Goal</b>   | <b>FY18 Actual</b> | <b>Percent</b> |
|---------------------------------|--------------------|--------------------|----------------|
| UNRESTRICTED                    | \$545,000          | \$560,255          | 103%           |
| RESTRICTED GIFTS and DESIGNATED | \$655,000          | \$758,431          | 116%           |
| <b>TOTAL</b>                    | <b>\$1,200,000</b> | <b>\$1,318,686</b> | <b>110%</b>    |
| <b>MEMBERSHIP</b>               | <b>3,400</b>       | <b>3,663</b>       | <b>108%</b>    |

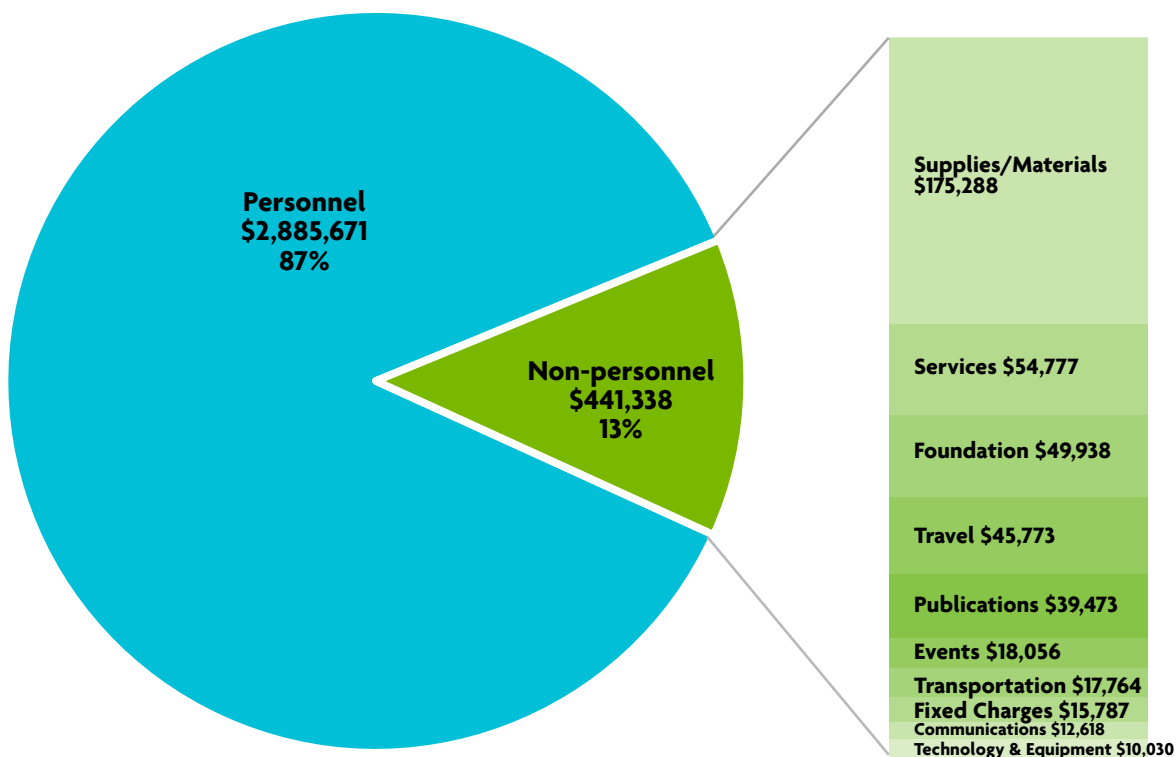


# Financials

## 2017-18 INCOME



## 2017-18 EXPENSES



# THANK YOU!

to all who have supported the Garden  
from July 1, 2017 to June 30, 2018

## \$100,000 and above

Mary Coker Joslin Revocable Trust

## \$50,000 – \$99,999

Anonymous (1)  
Syngenta Crop Protection, LLC  
The Estate of Patricia Aulik

## \$25,000 – \$49,999

Larry Blanton and Candace H. Haigler  
Lynne Blanton  
Chapel Hill Spring Garden Tour  
Chicita Culberston  
Marcella T. and Paul F. Grendler  
Florence F. and James L. Peacock  
The Estate of Barbara Roth

## \$10,000 – \$24,999

Anonymous (1)  
Bill and Pam Camp  
Becky and Munroe Cobey  
Greg Fitch and John Sweet  
Anne F. Harris  
James Joslin and Beth A. Hahn  
David and Laurie Joslin  
Julia E. Irwin Charitable  
Lead Annuity Trust  
Thomas S. Kenan  
Nolan D. Lovins  
Harriet and D.G. Martin  
Dave Robert  
Bill and Maryann Roper  
Robert E. Wyatt and  
Ann H. Stoneburner  
Janice C. Swab  
The Burt's Bees  
Greater Good Foundation

## \$5,000 – \$9,999

Bruce and Paula Alexander  
Anonymous (1)  
Mary T. Cameron  
Center for Plant Conservation  
Joan H. Gillings  
David and Lallie Godschalk  
Julia S. and William H. Grumbles  
Susan J. Henning and Vikram Rao  
Charlotte A. Jones-Roe and  
Chuck Roe  
Thomas Krakauer  
Paul and Mary MacDougall  
Noelle Macomson  
Michael and Julia McVaugh  
Scottie and David Neill  
Paul Green Foundation  
Stuart and Linda Paynter  
Caroline Royster  
The Burch-Safford Foundation, Inc.  
Barbara and Charles Safford  
Janice D. Stratton  
Sandy and Reaves Thompson  
Fran and Gary Whaley

## \$2,500 – \$4,999

Anonymous (1)  
Betsy and Walter Bennett  
Crandall and Erskine Bowles

Bob and Molly Broad  
The Cedars of Chapel Hill LLC  
Claire and Hudnall Christopher  
Douglas and Amy Colvard  
Victor Cutter  
Jan and Jim Dean  
Muriel Y. Easterling  
Deborah L. Hill  
Pat and Gene Holder  
Julie E. Irwin  
Paula LaPoint  
Mercedes-Benz of Winston Salem  
North American Lily Society Inc.  
Jim and Judy Pick  
David and Jenny Routh  
Southern Conservation Partners Inc  
Stephanie and Austin Stephens  
Damon and Sara Waitt

## \$1,000 – \$2,499

Anne and David Anderson  
Anonymous (2)  
Chuck Bean and Mary E. Howes-Bean  
Patricia C. Beyle  
Ernest R. Braasch  
Bradford and Cheryl Briner  
Sandra Brooks-Mathers and  
Michael Mathers  
Cotton and May Bryan  
Michelle A. Burdick  
Lale and John Burk  
Chip Callaway  
Katharine M. Chapman  
Kathryn V. Clancy  
M. E. Davis  
Arthur and Mignon DeBerry  
Carrie L. Donley and W. P. Gale  
Elizabeth A. Dutton  
Glen H. Elder and  
Sandy A. Turbeville  
Phyllis and Jack Evans  
Fine Feathers  
James C. Fort  
Gene G. Foster  
Mary A. Graves  
Hamilton Point Investment Advisors  
Dixie and Rus Hapgood  
Sandra L. Henson  
Mary L. Hill  
Larry and Lu Howard  
Mary C. Howes  
Stephen L. Keith and Lisa C. Glover  
Lewis and Susan Kellogg  
Susan J. Kelly  
Betty Kenan  
Lynn K. Knauff  
Randy and Cathy Lambe  
Nan and Edgar Lawton  
Martha and Charles Lewis  
Alice and John May  
Meghan L. McCleery  
Janis E. McFarland and  
Richard A. McLaughlin  
Nidia Messias  
H. C. Miller  
Nell and C.L. Morton  
J. Victor Nadler  
New Hope Audubon Society

Linda W. Norris  
North Carolina Invasive Plant Council  
Peg Parker  
Josephine W. Patton  
Robert K. Peet  
Frank B. Penta  
Phil and Kimberly Phillips  
Ona and Peter Pickens  
Ed and Nancy Preston  
Rich and Marilyn Preyer  
Missy and Sam Rankin  
Alan and Linda Rimer  
Wyndham G. Robertson  
Frances P. Rollins  
Bill Ross and Susan Gravely  
Jennifer and Al Runquist  
Tom and Margaret Scott  
Todd and Kathleen Shapley-Quinn  
Nancy S. Spencer  
John R. Staelin and Elizabeth Locke  
Surface 678, P.A.  
David and Terri Swanson  
Swanson & Associates Landscape  
Architecture  
Douglas and Roberta Tilden  
Edward C. Uebel  
Bernard P. and Effie C. Watson  
Barbara and Bob Wendell  
Joseph and Ramona Westmoreland  
Peter and Carolyn White  
D. J. Wilson  
John and Ashley Wilson  
Richard and Jennifer Woods  
Mark and Stacey Yusko

## \$500 – \$999

Ann and Lex Alexander  
Jim and Delight Allen  
Anonymous (1)  
Arkana Laboratories  
Mary Jo K. Barnett and  
Christopher Bogan  
Jennifer and Charles Baucom  
Wood and Catharine Burns  
Allen W. Bush  
Melissa M. Cain and  
Michael P. Wilder  
Bruce W. Carney and  
Ruth A. Humphry  
Cavalier Assets  
Ellen and William Chapman  
Ralph Costa and Joan Walker  
Country Oaks Garden Club  
Linda and Lawrence Curcio  
Jeff Dangl and Sarah R. Grant  
Van W. Daniel  
Rob Davis and Pauline H. Williams  
Sarah and John Dendy  
Judith Drost  
Mary and Joseph Dudley  
Carey and Billie Durham  
Salmen T. Fayed  
Garden Club of North Carolina Inc  
David and Joan Guilkey  
James and Dorthy Hardin  
Clay and Jane Harrell  
Ellen M. Herron  
Carol C. Hogue

Bo and Pat Howes  
Mary Elizabeth S. Huey and  
Daniel Hadley  
Ellen and Charles Johnson  
Richard K. Johnson  
Daniel J. Kenan  
John and Betty King  
Richard and Linda Koffenberger  
Ione and John Lee  
Judy and George Lockhart  
Grier and Louise Martin  
Mary and Elliott Wood Foundation  
Geraldine A. McDowell  
Mediterranean Deli & Catering  
Martha and Russell Mersereau  
Cyrus L. Miller  
Gail and Don Moore  
Sharon Morgan  
Robert and Beverly Murdock  
Thomas and Carmen Odom  
Mary Norris and Pat Oglesby  
Iola Peed-Neal and Edward M. Neal  
Chris and Bill Piscitello  
Mary L. Poe and Dennis A. Revicki  
Allan and Carrie Porterfield  
Edwin and Harriet Poston  
Maria A. Prio  
Raleigh Garden Club  
George and Ruth Ramseur  
Stephen and Sandra Rich  
Deborah and Edgar Roach  
Sallie S. Robinson  
Amy and Richard Rosemond  
Joseph H. Roycroft  
Heidi J. Sawyer-Clark and Kevin Clark  
Gifford Scott  
Phyllis and Philip Snyder  
Snyder Watchorn Foundation Inc  
Preston Stockton  
Charles V. Taft  
Sara and William Tangren  
Michael and Amy Tiemann  
Mary B. Todd  
Robert and Melissa Tolbert  
Carol P. Tresolini and  
Thomas A. Fiore  
Twin City Garden Club  
Jim and Alison Vernon  
Charlotte and Stephen Wainwright  
Margaret and William Walker  
Harriett and Fielding Whipple  
Cathleen and Turner Whitted  
Jeff G. Zais

## \$250 – \$499

Alan Johnson Landscape Services  
Catherine Alguire  
Anonymous (1)  
Brie and David Arthur  
Dorothy and Fred Askin  
Melodie Bagg  
E. R. Bahnon  
Wade and Marina Barber  
Cheryl M. Barnett  
Christine and Gerald Bell  
Larry and Sheila Benninger  
Catherine Bollinger and  
Thomas Scheitlin

John and Elizabeth A. Bozeman  
 Arden Brady  
 Clyde and Lois Browning  
 Steven D. Brunson  
 Joel S. Bulkley  
 Grady W. Burgin and  
 Charlotte L. Offerdahl  
 Nathan and Stephanie Byrd  
 Mary Clara Capel  
 Barbara D. Carman and Larry Hodges  
 Cary Driving Academy  
 Andrea L. Case  
 Linda G. Cash  
 Reece and Kathryn Chambers  
 Liang-Yeu Chern and Yolanda Yu  
 Samuel and Ann Clarke  
 June Clendenin  
 Marcia and William Daniell  
 Mary E. DeCoster and  
 James E. Warren  
 Martha J. Diefendorf and  
 Robert S. Hogan  
 Paul Donis  
 Kathleen Donohue  
 Susan and Peter Dorsey  
 Melissa Dowland and  
 Michael L. Dunn  
 Stephen and Laurelea Edwards  
 Barbara Entwisle and  
 Kenneth A. Bollen  
 Falls of New Hope Association, Inc.  
 Kent Fawcett and Susan Lamb  
 Lynn and Brenda Featherstone  
 Steven G. Feingold and  
 Hannah E. Martin  
 Stephen and Kimberly Fraser  
 Virginia and Frank French  
 Stephen and Susan Frye  
 Sheri Gant  
 Joanne K. Gardner  
 Joanne and Peter Garrett  
 Peter Gelber and Elisabeth A. Reid  
 Allen Glazner and Mary Olney  
 Jayne L. Gregory  
 Joe and Betsy Hackney  
 Judith H. Hallman  
 Lanay and Robin Hartmann  
 Elizabeth D. and Bryan Hickman  
 Barbara B. Hiestand  
 Loren D. Hintz and  
 Margaret Vimmerstedt  
 Bill and Bitty Holton  
 Laurie and Marc Howlett  
 Herbert Hurwitz and  
 Valerie B. Zamora  
 Robert and Heather Hutchins  
 Alan Johnson and Laurie H. Mettam  
 William and Mary Joyner  
 Johnny Kilgore  
 Lewis and Marjorie Kilgore  
 Megan Kilgore  
 Jeanette C. Kimmel  
 Connie King  
 Barbara and Dale Koch  
 Franklin and Jane Lamm  
 Benjamin A. Leder  
 Adrienne J. Lewis  
 Joanne and John Lott  
 Olivia and Richard Ludington  
 Diane S. Martin  
 Allen Mayers  
 Karen L. McCulloch  
 Joan S. McLean  
 Dwight and Deborah Messenger  
 Gary and Dana Mindlin  
 Pauline and David Moreau  
 Ariana Pancaldo and  
 Michael K. Salemi

Paperhand Puppet Intervention  
 Bettina Patterson  
 Marilyn and Robert Pinschmidt  
 John and Elizabeth Pringle  
 Karen L. Prus  
 Joseph and Xiaomei Reckford  
 Donna and Robert Reece  
 Margot and David Ringenburg  
 John W. Robinson  
 Gloria and James Rolls  
 Dennis and Sarah Ross  
 David Sackett  
 Michael K. Salemi and  
 Ariana Pancaldo  
 Kevin F. Satsky and Judith M. Thorn  
 Martha and William Scarborough  
 Joseph and Susan Scharff  
 Richard and Emily Scoville  
 Ross and Karen Scroggs  
 Steven and Susan Skolsky  
 E. L. Smith and Richard W. Trois  
 Fred and Alice Stanback  
 Dan Stern and Rosemary Byrnes  
 Laurel and Christopher Stolte  
 Madelyn Strickland  
 Stephen and Kylie Strother  
 Judith M. Thorn and Kevin F. Satsky  
 Norman and Miriam Tripp  
 Diane B. Vannais and  
 Charles A. Waldren  
 Frank and Mary Watson  
 Lysandra and Adam Weber  
 Anna B. Weil  
 Diane E. Wickland  
 William C. Coker Garden Club  
 Delbert and Ann Williams  
 Richard and Anita Wolfenden  
 Dana and Joe Woody

**\$100 – \$249**

David and Judith Adamson  
 R. A. Adcock  
 Frank and Joan Adler  
 Michael D. Aitken and  
 Betsy B. Rudolph  
 William and Gail Alberti  
 Anne Albright  
 Dorothy J. Allard and Bill Martin  
 Gordon M. Allen and Maryann  
 Feldman  
 Frances M. Allen  
 Alpha Phi Omega  
 Linda and Jack Alphin  
 George N. Altshuller and  
 Miao-Fang Lin  
 Anthony and Tricia Amitrano  
 Natalie Ammarell  
 Jeanette and Andrew Ammons  
 Katelyn H. Ander  
 Amy L. Anderson and  
 Nancy Maeder  
 Karen Anderson  
 Susan and James Anderson  
 Ellen M. Andrews  
 Michael and Mary Andrews  
 Anonymous (7)  
 Nancy Aycock and Dan Leigh  
 Virginia V. Baeckler  
 Carol and Tomas Baer  
 Donna D. Baird and Ninian Beall  
 Ingrid and Guy Baird  
 Jeffrey Baker  
 Edward C. Balinsky  
 Betsey Bancroft-Wu and Yue Wu  
 Virginia Q. Banks  
 Gary and Barbara Barnes  
 Robert R. Barraza  
 Gerald A. Barrett

Coyla B. Barry  
 Karen Bartley  
 Charlotte T. Battle  
 Donna H. Bauer  
 Carson and Martha Baur  
 Jeffery S. Beam and Stanley G. Finch  
 Edward and Barbara Beason  
 Frederick O. Behrends  
 Allison and Scott Belan  
 Kathryn E. Bell  
 Elizabeth and Danny Bell  
 Todd and Amanda BenDor  
 George V. Bennett and  
 Bernadette Pelissier  
 Ronald R. Benson and  
 Nellie I. Hansen  
 Jan Beresford  
 Donna A. Bergholz  
 Bernice I. Bergup  
 Mary E. Berkley and  
 James E. Mueller  
 H. A. and Rachel Bethune  
 Birch Meadow Garden Care  
 Dave Birkhead and Kathy Stanford  
 Jody Bisbee and Marty Schweitzer  
 Donald A. Black  
 Jay and Sherrie Black  
 Stanley W. Black  
 Susan Blackford and Jan Hansen  
 Don and Betsy Blankenship  
 Patricia J. Blanton and  
 D. R. McConnaughey  
 Sankey L. Blanton and  
 Susan E. Swanson  
 Kim and John Blatz  
 Jennifer and John Boger  
 Deborah W. Bolas  
 Lon and Mary Bonczek  
 Calhoun Bond  
 Paul and Patricia Bonham  
 Audrey J. Booth  
 Ann and William Borden  
 John J. Boren  
 Victoria and P.S. Bouldin  
 Michelle and Pierre Bouvette  
 Ian Bowater and Sheryl L. Sims  
 Mary B. Bowers  
 Bill Bracey  
 Angela Brammer  
 Sherry Brennan and Capel States  
 Lynne E. Bresler  
 Irene and Robert Briggaman  
 Kay Briggs and Chris Hitt  
 Florence and John Brinkhous  
 Kathryn and Edward Britton  
 Richard L. Broadwell  
 Eunice M. Brock  
 Erin K. Brophy  
 David W. Brown  
 Jane Bruce  
 Louise and Charles Bryan  
 Catherine Bryson  
 John and Kathleen Bucher  
 Carolyn and Charles Buckner  
 Laurinda Q. Burleson  
 William V. Burlingame  
 Joan and Maurice Bursley  
 Marilyn Butler and Ed Haffer  
 Chalmers and Rachel Butler  
 Marilyn Butler and  
 Robert C. Nichols  
 John and Asa Butts  
 Alvis and Susan Bynum  
 DeLane and Lee Califf  
 Leigh F. Callahan and  
 John B. Winfield  
 Traute Cameron

Christina C. Campbell and  
 Whitcomb M. Rummel  
 Elizabeth A. Campbell and  
 James E. Godwin  
 Linda L. Campbell and  
 Arthur Feingold  
 Cannonball LLC  
 Linda and Philip Carl  
 Alice C. Carlton and David F. Curtin  
 Carolina Friends School  
 Roberta Carpenter  
 Andrea L. Carpenter  
 Valerie and Bernard Carr  
 Stephen and Nancy Castellino  
 Emily and Scott Cawood  
 Emil and Margaret Cekada  
 Center for Creative Balance  
 Joseph and Florence Chaffin  
 Chapel Hill Garden Club  
 Barbara and John Chapman  
 Julie M. Chappell  
 George and Jean Cheely  
 Thomas and Nancy Cheewing  
 Wei-Ting Chi  
 Linda and Charles Childers  
 Norman and Portia Christensen  
 C. L. and Melanie Christian  
 Edith A. Christian  
 City of High Point  
 Gary and Margaret Clark  
 Margaret and Tony Clark  
 Brenda and Ross Clark  
 Janet E. Clark and Janice D. Pope  
 Louise M. Clifford  
 Kathryn M. Cloughly and  
 Brian Mawby  
 Betty J. Coker  
 Judith C. Coker  
 Cathy S. Cole  
 Thomas B. Cole and  
 Sandra L. Cianciolo  
 Colony Woods Garden Club  
 Joseph C. Colosi  
 Helena and J. S. Coman  
 Cindy and Tom Cook  
 Edward and Ellen Cook  
 Mark and Elizabeth Cook  
 David and Anne Cottingham  
 Marie and Alexander Coucoulas  
 Eppie B. Cox  
 Betsy B. Creech  
 Timothy Crouse  
 David B. Crutchfield  
 Jennifer and William Cure  
 David F. Curtin and Alice C. Carlton  
 Linda and John Curtis  
 Kerry-Ann da Costa and Tom Grizzle  
 Vincent and Sandra Dabrowski  
 Lisa A. Dailey  
 Brian and Brenda Davis  
 Faye S. and Michael J. Davis  
 Patricia L. Davis  
 R.P. S. Davis  
 Thomas F. Davis  
 Linda J. Dawson  
 Geraldine E. Day  
 Paul A. Dayton  
 Emilie P. de Luca  
 Meredith B. de Rham  
 Amy C. Denham and  
 Jonathan B. Simmons  
 Virginia Dickie  
 Roy C. Dicks and  
 Bobby J. Ward  
 Alice and Arthur Domby  
 Fern and Charles Donohue  
 Laurence J. Dorr  
 Rebecca Dotterer

Marna Doucette and Stephen N. Quessy  
John and Gail Dove  
Almond and Lori Drake  
H. M. and Ann Drake  
J. M. and Lynne DuBose  
Howard M. DuBose and Susan Hester  
Jeanne P. Duggan  
Duke University Energy Initiative  
Noel and Shelby Dunitant  
Margaret and William A. Dunson  
Samuel and Beverly Dyer  
Jo Anne and H.S. Earp  
Ellyn R. Easterling  
George and Suzanne Eckard  
Erin and David Eckert  
Gary and Laura Edmundson  
Karen M. Eldridge  
Wendy Elliott  
Katherine and Joseph Ely  
Kathryn and Peter Enchelmayr  
Jane and James Ericksen  
Kristi E. Erickson  
Allison L. Essen  
Carolyn S. Esslinger  
Susan and C. A. Eure  
Laura and Vann Evans  
Lisa G. Eveleigh and Louis M. Kyriakoudes  
Sara P. Faccidomo  
Shauna and Thomas Farmer  
Gayle M. Fehlmann  
Jennifer E. Feldman and Benjamin Z. Landman  
Thomas and Laura Fenn  
Gordon J. Ferguson and Roberta A. Owen  
Jim and Mary Fickle  
Nancy and Burton Fink  
Patricia and Frank Fischer  
Juliana Fisher  
Mary F. Flanagan  
Pam and John Floyd  
Nina and Milton Forsyth  
Amelia and James Fountain  
John R. Fowle and Karen K. Henry  
Virginia and Thomas Foxx  
Diane Frazier  
Dianne and James Frazier  
William and Carol Freund  
Paul Fromson and Ann Walter-Fromson  
Julia C. Gamble and David R. Long  
Garden Club Council of Winston-Salem & Forsyth County  
Alice C. Garfield  
Julie and Pete Gaskell  
Patricia G. Gensel  
Susan and Kip Gerard  
Marion and Malchus Watlington  
Donna and Gary Gilleskie  
Diane E. Gillis  
Peter and Tona Gilmer  
Geoffrey and Jane Gledhill  
Danny and Sally Glover  
Kimberly and James Goff  
Lawrence and Janice Goldrich

Mary E. Goode and Matthew B. Spangler  
Mike and Margaret Goode  
Emily and Robin Goodson  
Toni T. Goodyear and Margaret Pumphrey  
Roger B. Gorham  
Charles and Karen Goss  
Terry and Joe Graedon  
Sharon L. Graham  
Judith and Lester Grant  
Dale E. Green  
Paul and Catherine Green  
John M. Griffiss  
Johanna M. Grimes  
Henry and Naoko Grossberg  
Leslie Guier  
Christa Gunderson  
Catherine A. Gutmann  
Richard A. Hall and Douglas Potts  
Susan H. Hall and Acharan S. Narula  
Daniel K. Halter  
Michael and Teresa Hammersley  
Timothy and Maria Hanlin  
Kiel J. Harms and Shawn Teaman  
Albert and Elizabeth Harris  
Tom and Sarah Harville  
James and Kathy Hasty  
Tammy Havener  
W. Lance Haworth  
Mary H. Hawthorne  
Carol J. Hazard and Winston Liao  
Robert Hellwig and Gordon P. Whitaker  
J. D. Helms  
Emilie A. Hendee  
William and Marilyn Henshaw  
Jean and Seth Hetherington  
Daniel and Jane Heuser  
Sandra and William Hibberd  
Barbara and James Higgins  
Karen J. Hill  
Anne and Charles Hines  
Billie Hinton  
Rosemary E. Hoban and Stephen G. Tell  
Kay and John Hobart  
Deborah M. Hock  
James C. Hodges  
Harriet T. Holderness and James E. Luebchow  
David M. Holland  
Sarah and Stan Holland  
Katherine and Arthur Holman  
Loretta and Donald Hopper  
James W. Horn  
Barbara T. Horton  
Hope Horton and Paul Voss  
Albert and Lois Howlett  
Eugene and Joyce Huguelet  
MaryJane F. Hunt  
Thomas B. Hunter  
Joan C. Huntley  
Sarah and David Huppert  
Wesley A. Huppert  
Gerda G. Hurow  
Nancy and Richard Hurst  
Carolyn and Lynn Ikenberry  
Linda and Guy Inman  
Khalid S. Ishaq  
Suzanne Iwicki  
Rodney James

Marti and David Jenkins  
Michael W. John  
John A. McLendon  
David A. Johnson  
Clarence E. Johnson  
Harold and Kristina Johnson  
Eleanor S. Johnson  
June H. Johnson  
Carolyn and R. W. Jones  
elisa Jones and Judy Riley  
Glenda P. Jones  
Clasun and Alvin Jones  
Thomas H. Jones  
Mary Lynn H. Jordan  
David and Nicola Jordan  
Susan Joseph  
Thomas Kagan and Amy Mackintosh  
Mary and William Kaiser  
William E. Kallam and Rhessa Versola  
Virginia and Kenneth Karb  
Mary Beth and Robert Keiter  
Marie-Beatrice and Robert Keller  
Kim K. Kelly  
Mildred G. Kelly  
Arlon K. Kemple and Karen E. Long  
Catherine and Jeffrey Key  
Charles Kidder  
William M. Kier and Kathleen K. Smith  
Timothy and Rebecca Kieronski  
Brian and Moyra Kileff  
Paul Killough and Lynn S. Wilson  
John and Elizabeth King  
Harriet and J.K. King  
Charity Kirk and Bradley Saul  
Harley and Billy Kirkland  
Paul and Phebe Kirkman  
Sharon and James Kirkman  
Ronald C. Knight  
Barbara A. Koch  
Gary and Carolyn Koch  
James and Sally Kocher  
Jill and Zachariah Kohn  
Keith and Ruth Kookan  
Loren S. Koziol  
Jutta G. Kuenzler  
Timothy A. Kuhn  
Elizabeth Kuniholm  
Michael and Erin Kunz  
Linda and William Lafferty  
Karen Lamar  
Nancy O. Lamb  
Ellen Lambeth  
Sarah E. Lane and Gerald N. Oakley  
Lynn and Jeffrey M. Lang  
Nell and Joseph Laton  
John Lawton and Elizabeth Millwood  
Lorraine A. Lee  
Joel Leininger and Patricia M. Turlington  
Mary Leonhardi  
James H. Leshner and Eleanor S. Rutledge  
Christine M. Levesque  
Andrea R. Lewis  
Phillip and Candice Lewis  
Elizabeth L. Ley  
Yan Li and Lishan Su

Gene Liau and Adaline C. Smith  
Allan and Page Life  
Jim and Christy Lilley  
Margaret and Robert Liloia  
B. P. Lindsay  
Charles D. Liner and Camilla Tulloch  
Marilyn and Garnett Link  
Tonia and Regan Linke  
Brown and Mark Little  
J. M. and Susan Little  
Bert and Mary Liverance  
Gayle P. Lloyd  
Caroline and Donald Lloyd  
Kenneth and Catherine Lohmann  
James and Cynthia Lohr  
John and Mildred Long  
Katie R. Loovis  
Anne Loustau  
David and Eleanor Lowry  
Andrew and Jess L'Roe  
Cynthia L. Lutz  
Megan Lynch  
Martha A. Magenheim  
H.R. and Betsy Malpass  
Gus and Geary Mandrapilias  
A. R. Marley  
Benton and Korene Marsh  
Stephen W. Marshall and Anna E. Waller  
Katharine Marshall and Matt Tulchin  
David L. Martin  
Nancy M. Martin  
James F. Matthews  
Ann G. Matthyse  
Alicia and Eugene Maynard  
Sueann Mazer and Gary Powers  
Jeffrey and Dianna Mazza  
Brenda McAdams Motsinger and Michael Ray  
Carrie A. McCann  
Ned and Sandra McClurg  
Milton and Gail McCollough  
Carol A. McCormick and Mark A. Peifer  
Karen and Gary McDougal  
Ross and Holly McKinney  
Ross and Margaret McKinney  
Barbara McLean  
Mari J. McLean  
John A. McLendon  
Rachel E. McManus  
Michael and Martha Medford  
Paula and Samuel Medina  
Mary Jane and John Meeker  
Larry and Audrey Mellichamp  
Margaret Menache  
Areatha and Douglas Mendenhall  
Joy and Paul Mermin  
Jason Merritt  
Mark and Lindsay Merritt  
Estelle Metzger  
Sandra and Tom Meyer  
Mary Leonhardi  
Katherine and Thomas Mills  
Thomas G. Safford  
Deborah Mitchell  
Karen Mohlke and Robert E. Wray  
Gerald and Susan Monahan  
Diana L. Monroe and Robert Zandt

John and Jane Monroe  
Gustavo and Joan Montana  
Jerry E. Moore and Robert G. Sox  
Julie H. Moore  
Ken Moore and Kathy K. Buck  
Rua and Kathryn Mordecia  
Frank H. Moretz  
Susan Morgan  
Dexter L. Morris and Patricia S. Tennis  
Michael and Gretchen Morrissey  
Donna and William Moul  
Pamala and William Muller  
Kent and Miriam Mullikin  
Robin and Randall Mullis  
Katherine A. Murphy and Andrew M. Sachs  
Patricia L. Murphy  
Brian and Jeanne Murray  
Sally M. Murray  
Mary Jo Muzzey  
Sharon A. Myers  
Paul and Linda Naylor  
Scottie and David Neal  
Nancy L. Newell  
Donna and Arthur Newton  
Anne W. Nielsen  
Paula D. Noell and Palmer T. Page  
Trevor and Laura Norris  
North Carolina Native Plant Society  
Thomas and Jean Nuzum  
Thomas and Mary O'Dwyer  
Melinda and James Ogburn  
Carol and Jim Oleson  
Elise Olsen  
Angela and Michael O'Rand  
Margaret O'Shaughnessey  
Lou and Michael O'Shea  
David A. Otto  
Elizabeth E. and Robert W. Owen  
Edward and Mary Owen  
Julie and Michael Papay  
Esther and Leonard Pardue  
E.B. B. Parker  
Grant and Leslie Parkins  
Ann B. Parent and Leo Reynolds  
Carol and Robert Passmore  
Stacia Payne  
David and Cary Paynter  
Margaret and W. R. Pearson  
David R. Peart  
Barbara and Lee Pedersen  
Goutham Penmetsa  
W. G. Penry  
Rebecca L. Perritt  
Gail Perry  
Merrill Petrow  
Mary J. Pichulik  
Gordon and Janice Plumblee  
David and Louise Poer  
Louise B. Pollard  
Richard Poole and Sandra Schroeder  
Paul Popish and Beth Schultz  
Christopher P. Porier  
Katherine M. Porier  
Frances and Stephen Porter  
Elizabeth P. Potter  
Helen Prescott  
William O. Prescott  
John and Charlotte Presley

Sydnor and  
Lacy Presnell  
Michael A. Price  
Jerry and Faye Price  
Forrest and Stewart Priddy  
Michelle and William  
Pritchard  
Martha A. Propst  
Elizabeth Pullman  
David and Clare Pulman  
Charles E. Purrington  
Jane M. Purrington  
Dana and Erna Quade  
Kader and Margaret Ramsey  
Peter W. Redfield and  
Silvia Tomaskova  
Katharine L. Reid  
Stefan and Nicole  
Reinartz  
Martin and Laura Renkis  
April H. Reyes  
Christie and James Rice  
Lynn Richardson  
Thomas and Diana  
Ricketts  
Carl and Lisa Rist  
Mark and Jane Ritchie  
Judith A. Rizzo  
Amara and Ladell  
Robbins  
E.T. and Charlotte Robbins  
Sylvianne Roberge  
Eric Robinson and Susan  
Zarutskie  
Betty and C. S. Rogers  
Sally Rohrdanz  
Margaret A. Rook  
William and Elizabeth  
Rouse  
Elizabeth B. Russ  
Miranda and Jaime Sanchez  
Eugene and Gail Sandler  
Margaret E. Scarborough  
Nidia T. Scharlock  
Jerree Scheitlin  
Eric and Barbara  
Schliebe  
Zsuzsi and George  
Schroeder  
Peter and Margaret  
Schubert  
Zoe Schumaker  
Amy and Mark Scurria  
Ernest H. Sears  
James Senter  
Maria R. Servedio  
Robert E. Seymour  
William and Carol Sheftall  
Connie and Sid Shepherd  
Neal Shepherd  
Susan Shevach  
Shoe Show Incorporated  
Andrew B. Short and  
Andrea D. Vizoso  
Headley Shouse  
Richard and Linda  
Shrader  
Eve and Carl Shy  
Stephanie Simon  
Bland and Ann Simpson  
Paula J. Sims  
Peter Skinker  
Nancy and Hunter  
Sledd  
Marion Sledge  
Laura and Clyde Smith  
Steven H. Smith  
Linnea W. Smith  
Linda and Charles Smith  
Holmes B. Smoot  
Robert and Marianne Smythe  
Mary and Jeffrey Sonis

Jeffrey and Eileen Soo  
Kirby Spicer  
Timothy Spira and  
Lisa K. Wagner  
Margaret and  
Richard Sprott  
Charles and Christine Stanley  
Vincas P. Steponaitis  
Alan and Maxine Stern  
Ramelie and Frederick Stevens  
Jean C. Stewart  
Horst and Judy Stierand  
Amanda and Fred Stipe  
Josephine W. Stipe  
Sue S. Stoudemire  
Michael C. Strickland  
David F. Suttler  
Kelly and John Suttles  
Paul J. Szaniszlo  
Elizabeth and David Taylor  
Priscilla P. Taylor  
Paul and Lita Thau  
The Barn of Chapel Hill at  
Wild Flora Farm  
Charlotte and Wayne  
Thomann  
Dixie L. Thompson  
Patricia and Charles  
Thompson  
Kenneth R. Tindall and  
Susan C. Turbak  
Jessica and Charles  
Tomberlin  
Nancy and John  
Tomkovic  
Gilbert and Phyllis Toon  
Town and Country  
Garden Club of Winston-Salem  
Frederick and Martha Townes  
Tracy Traer  
Robert J. Trawick  
Anna and Craig  
Troutman  
Carolyn Tucker  
William and Jane Tucker  
William P. Tucker  
John M. Turner  
Barbara and Raul Tuset  
Gary and Elizabeth Ulicny  
Susan L. Van Eyck  
Laura C. Van Sant  
David and Melanie Vandermost  
Anne D. Varley  
Grant and Vivian Varner  
Sandra L. Venegoni  
Todd J. Vision  
Anne R. Wade  
Wynn W. Wagenseil  
Lynda and George  
Waldrep  
Richard I. Walker  
Sylvia S. Wallace  
Steven A. Warner  
David and Marion Waters  
Malchus and Marion  
Watlington  
Celeste and John Watts  
Wayne and Carolyn Jones  
Alan S. Weakley  
Peter H. Webb and  
Jessica B. West  
Elizabeth and  
James Wells  
Paul F. Wells and  
Sally K. Smith  
Wyndel S. and  
Darryl S. White  
Clarence E. Whitefield  
Neva and Clay Whybark  
Wildflower Club of  
Winston-Salem  
Sara and G. J. Wilds

Haven and  
Minna S. Wiley  
Suzanne T. Williams  
Lydia and Charlie  
Williams  
Ronald D. Williams  
Ann and Roy Williams  
Patricia and William Williamson  
Janet H. Wilson  
Stephen D. Wilson  
Noah and Susan Wilson  
Ann and Frank Wilson  
Joyce and Steven  
Winterbottom  
Jane P. Wiseman  
John C. Wood  
Jerry M. Worsley  
Joan and John Wrede  
David and Heather  
Yeowell  
Tom and Janice Yermack  
Nancy Zimmerli  
Elizabeth S. Zimmerman  
Jean and Ronald Zula

**We appreciate all memberships and additional gifts to the Garden!**

**Tribute Gifts received from July 1, 2017 to June 30, 2018**

## IN HONOR OF

### Nick Adams

Mary F. Flanagan  
Lynn and Carolyn Ikenberry,  
for Battle Park Fund

### Brie Arthur

Brookhaven Night Garden Club  
Springdale Estates Garden Club

### Lynda Baddour, on the occasion of her birthday

Duffy and Fred Askin,  
for Children's Wonder Garden

### Geoffrey Barton and Shoshana Fried, on the occasion of their marriage

Emily and Richard Scoville,  
for Battle Park Endowment

### Jennifer B. Baucom

For Wonder Connection  
Michael Baucom

### Gerald and Christine Bell

Wood and Catharine Burns, for  
Coker Arboretum Endowment  
and the Director's Fund

### Catherine Bollinger

Jerree Scheitlin

### Sherry Brennan

Katie R. Loovis,  
for Coker Arboretum  
Endowment

### Sandra Brooks-Mathers

Mary DeCoster and  
James Warren

### Melissa McComb Cain

Kimberly and James Goff,  
for Coker Arboretum  
Endowment

### Victoria Searcy Castor

Carey and Billie Durham

### Joe and Flo Chaffin

Alvis and Susan Bynum,  
for Wonder Connection

### Munroe and Becky Cobey

Mary B. Todd, for the Jim Todd  
Living Plant Endowment

### Nancy Easterling

For the Horticultural Therapy  
Program

Catherine Alguire  
Sandra Brooks-Mathers and Mike  
Mathers

Pam and Bill Camp  
Barbara Carman and Larry  
Hodges

Sarah and John Dendy  
Betsy Donovan

Allison Essen  
Nina and Milton Forsyth  
Anne D. Geer and David Scott,  
for General Support

The Greenbriers

Anne F. Harris

Shawn Hoffman  
elisa Jones and Judy Riley  
Glenda P. Jones,

for Educational  
Outreach

Charlotte Jones-Roe  
and Chuck Roe

Stephen L. Keith and  
Lisa C. Glover

Lynn K. Knauff

Timothy A. Kuhn

Paula LaPoint

Joanne and John Lott

North Carolina Botanical

Garden Staff

Mary Norris and Pat Oglesby

Bettina Patterson

Missy and Sam Rankin

Margot and David Ringenburg

Roberta and

Douglas Tilden

Susan C. Turbak and

Kenneth R. Tindall

Damon and Sara Waitt

Barbara and

Bob Wendell

Fran and Gary Whaley

### Steven G. Feingold

Linda Campbell and  
Arthur Feingold

### Elizabeth McIntyre Fitch-Sweet

Nancy G. Schoonmaker

### Ken and Laura Frazier

Susan and Steven Skolsky,  
for Battle Park Fund

### Mary Stuart Gilliam

Wood and Catharine Burns, for  
Coker Arboretum Endowment  
and the Director's Fund

### Matt Gocke

Missy and Sam Rankin  
Damon Waitt

### Stirling and Sara Haig

Wood and Catharine Burns, for  
Coker Arboretum Endowment  
and the Director's Fund

### Christopher C. Hanlin

Timothy and Maria Hanlin,  
for Wonder Connection

### Lisa Hatch

Peter Skinker

### Marilyn Henshaw

William R. Henshaw,  
for Friends of UNC Herbarium

### Debbie Hill

Anne Mack

### Virginia Stewart Houk

Nancy and Tom Chewning, for  
the Fred and Virginia Houk  
Sustainability Internship Fund

### Mary Cook Howes

Wood and Catharine Burns, for  
Coker Arboretum Endowment  
and the Director's Fund

### Wesley Huppert, on the occasion of his 2nd birthday

David and Sarah Huppert

### Jane Quinn Jenkins

David and Marti Jenkins

### Charlotte Jones-Roe

Grier and Louise Martin  
Harriet and D.G. Martin  
Brandon and Kelly Wright

### Mary Kiger

Freddie Kiger,  
for Battle Park Endowment

### Skip Kauffman

Jessie C. Howington,  
for the Living Plant Fund

### Stephen Keith

Linda K. Chadwick  
Susan B. Strickland

### Gavin Leone

Stacey E. Richardson

### Gloria Lightsey-Lewis

Robert M. Lewis

### Claire Lorch

Daniel Kenan, for Carolina  
Campus Community Garden

### Townsend and Jane Ludington

Wood and Catharine Burns, for  
Coker Arboretum Endowment  
and the Director's Fund

### Margo MacIntyre

For Coker Arboretum  
Endowment

Emilie P. de Lucas

Charlotte Jones-Roe and

Chuck Roe

Lary Mellichamp

### Sara Manfred, on the occasion of her birthday

Katherine Manfred, for Carolina  
Campus Community Garden

### Harriet Wall Martin

Kitty E. Bell

Tina and Jerry Bell

Betty Kenan,

for Battle Park Endowment

**Harriet and D.G. Martin**

Wood and Catharine Burns, *for Coker Arboretum Endowment and the Director's Fund*

Grier and Louise Martin  
Steve and Frances Porter

**Jim R. Massey**

Sherry Morgan, *for Carolina Moonlight Garden Party*

**Thad and Coolie Monroe**

Wood and Catharine Burns, *for Coker Arboretum Endowment and the Director's Fund*

**Ken Moore**

Pete and Margaret Schubert

**Ken Moore and Kathy Buck**

William and Jan Truitt

**Liz Moore**

Peter Skinker

**Nell Hatley Morton**

Libba and Jim Wells

**David B. Moss**

Angie Hall

**NCBG Tour Guides**

Grant and Leslie Parkins

**Scottie Neill**

Mary and Joe Dudley

**Ann Palmer**

Palmer and Anne Seeley, *for Natural Areas Endowment*

**Leah Peterson, on the occasion of her birthday**

*For Wonder Connection*  
The McDaniel Family  
The Nelson Family  
The Wisdom Family

**Ed and Nancy Preston**

Wood and Catharine Burns, *for Coker Arboretum Endowment and the Director's Fund*

**John and Betsy Pringle**

Wood and Catharine Burns, *for Coker Arboretum Endowment and the Director's Fund*  
Bill and Jane Tucker

**Adele Richardson Ray**

Mary Norris and Patrick Oglesby, *for Wonder Connection*

**Stephen A. Rich**

Laurice Ferris  
Harriet and Kimball King, *for Carolina Moonlight Garden Party*

**Bill Ross and Susan Gravely**

Charlotte Battle, *for Battle Park Endowment*

**SBM Life Science Corp.**

Cannonball, LLC

**Barbara F. Schutz**

Wood and Catharine Burns, *for Coker Arboretum Endowment and the Director's Fund*

**Tom and Margaret Scott**

Jane Royster  
Cynny Scott and Rich Beckman

**Blaine and Susan Short**

Anne Loustau, *for Friends of UNC Herbarium Fund*

**Katie Stoudemire**

Sarah and John Dendy  
Jordan and Sarah Gatenby  
Kathleen F. Wagner  
Sylvia S. Wallace

**Alon Tal**

Allison Essen, *for Mason Farm Biological Reserve Endowment*

**Cricket Taylor**

Sandra Brooks-Mathers and Michael Mathers, *for Wonder Connection*

**Charles LeRoy Thompson, for our 50th wedding anniversary**

Pat T. Thompson

**Sue Tiedeman**

Betty White

**Douglas and Roberta Tilden**

Stephen Keith and Lisa Glover

**Susan Trout**

Robin and Randy Mullis, *for Wonder Connection*

**Sally Couch Vilas**

Larry Fleishman

**Damon Waitt**

Catharine and Wood Burns

**Deborah S. West**

Jessica West and Pete Webb

**Fran Whaley**

Meredith Quinn

**Peter S. White**

Chickie and Bob Smythe

**Kay Wyche**

Henrietta M. Adams

**Wonder Connection's Pediatric Patients**

Susan Trout, *for Wonder Connection*

**IN MEMORY OF****Sally Elizabeth Anderson**

Elizabeth A. Dutton, *for Wonder Connection*

**Ray E. Ashton, Jr.**

Elizabeth A. Lord

**Debbie Barnett**

Beverly and Samuel Dyer, *for Mason Farm Biological Reserve Endowment*

**John Belina**

Wynn W. Wagenseil

**C. Ritchie Bell**

Laurence J. Dorr  
Charlotte Jones-Roe

**Harriet Bellerjeau**

Suzanne S. Edney

**Donna Elaine Bennick**

Helen H. Perlmutter  
Elizabeth B. Russ

**Marilyn D. Blanton**

*For the Mary McKee Felton Herbarium Internship Fund*  
Larry Blanton and Candace Haigler  
Lynne Blanton

**Jane F. Brinkley**

Julie W. Peck

**Melinda Kellner Brock**

Eunice M. Brock

**Janie Leonard Bryan**

John Belina  
Charlotte Jones-Roe  
Wynn W. Wagenseil

**Shantel K. Bryant**

*For Wonder Connection*  
Cary Driving Academy  
Melodie Bagg  
Deborah Burchfield

**Myra Tatum Bullock**

Andrew Moeller

**Mary Jane Burns**

Wood and Catharine Burns, *for Coker Arboretum Endowment and the Director's Fund*

**Betye Boyd Carey**

Martha A. Propst

**Raymond L. Carpenter Jr.**

Patricia A. Carpenter

**Wayne E. Cash**

Linda G. Cash

**My Cat Angel**

Susan Shevach

**Jimmy Causey**

James and Kathy Hasty

**Glenna Marie Lake Chapin**

Donna A. Gergholz

**Michael Clendenin**

Stephen Keith and Lisa Glover

**Gretchen Cozart**

Gene G. Foster

**J.N. and Kate Coble**

Rebecca S. Coble

**J. F. Colvard**

Charlotte Jones-Roe

**Gretchen Cozart**

Gene G. Foster

**Gretchen and Zeke Cozart**

Charlotte Jones-Roe

**Ann Cutter**

Linda and John Curtis

**Martha Manning Davenport**

Helen F. Cain-Colella  
Emilee A. Colella  
Arthur and Mignon DeBerry  
Al and Susan Jones  
Litchfield Villas  
Victoria and David Neunert

Monty and Joan Speir  
Marion and David Waters

**Emily Cox DeLapp**

*For Natural Areas Endowment*  
Connie King  
Laverne Smith  
Rick Trois

**Francois Xavier Deprez**

Mary Clara Capel, *for Battle Park Expendable and Coker Arboretum Improvement Fund*

**Diamond Family**

Lauren Diamond

**Anna "Frankie" DuBose**

Arthur and Mignon DeBerry

**David Dyer**

Beverly and Samuel Dyer, *for Mason Farm Endowment*

**Karen Elder**

Charlotte Jones-Roe

**Jean Fort**

James C. Fort, *for Coker Arboretum Endowment*

**Priscilla Freeman**

David and Constance Freeman  
Alan and Maxine Stern, *for Living Plant Fund*

**Elizabeth S. Fudge**

Mary Beth and Robert Keiter, *for Horticulture Fund*

**Mother Elinor Gabbey**

Patricia G. Gensel, *for Battle Park Endowment and the Horticulture Fund*

**Rob Gardner**

Laura and Vann Evans  
Charlotte Jones-Roe

**Eleanor George**

Charlotte Jones-Roe

**Amy Gitelman**

Honre F. Gitelman

**David Godschalk**

Charlotte Jones-Roe  
and Chuck Roe

**Harry Gooder**

LiddyBet Holsten  
Charlotte Jones-Roe  
and Chuck Roe  
Stephen L. Keith and Lisa C. Glover  
Barbara and Bob Wendell  
Peter and Carolyn White  
Eric J. Zogry

**Sarah L. Greene**

Sally Greene and Paul Jones

**Victor A. Greulach**

Susan G. Scharff

**Gozelle Ham**

Martha and "B" Townes, *for the Living Plant Fund*

**John R. Hamill**

Bill and Marcia Daniell

**Jim Hart**

Janese and Elman Frantz

**Letitia Haworth**

Lance and Letitia Haworth  
Gramma Marie Hemmes  
Sonja S. Preston

**Andrew C. Henley**

Elena G. Elms  
Tom and Sandra Henley

**William and Evelyn Heuser**

Daniel and Jane Heuser

**Mary McCleskey Hinton**

Charlotte Jones-Roe  
and Chuck Roe

**Howard and Joy Hintz**

Loren Hintz and Margaret Vimmerstedt

**Edward Shelton Holmes**

Arthur and Mignon DeBerry

**W. Clary Holt**

Kate Bottomley and W. J. Hold

**Michael Kenneth Hooker**

Carmen H. Odom

**Jonathan Howes**

Mary C. Howes  
Charlotte Jones-Roe  
and Chuck Roe  
Stephen L. Keith  
and Lisa C. Glover  
Jencie Stewart, *for Battle Park Endowment*

**Frederick J. Houk**

Thomas A. Yermack

**Mercer Reeves Hubbard**

Charlotte Jones-Roe

**Kenneth W. Hunt**

Charlotte Jones-Roe  
and Chuck Roe

**Kathleen R. Irish**

Chapel Hill Garden Club

**Mary Ishaq**

Charlotte Jones-Roe

**Mr. Jasper**

Rita Mangus, *for Battle Park Endowment*

**Pamela Elton Jenks**

Paul and Patricia Bonham, *for Coker Arboretum Endowment*

**E. Felton Jones**

Harold and Kristina Johnson, *for Coker Arboretum Endowment*

**Edgar Leonard Jones and Charlotte McCleskey Jones**

Charlotte Jones-Roe  
and Chuck Roe

**Mary Coker Joslin**

Bob Davis and Judy Morgan-Davis  
Judy Morgan-Davis

**William and Mary Coker Joslin**

Charlotte Jones-Roe  
and Chuck Roe

**Caitlin Kennedy Kelly**

Kim Kelly  
Mildred G. Kelly

**Margaret “Meg”  
Graham Kemper**

Terri L. Phoenix

**Alexander Eugene Kenan**

*For Carolina Campus Community  
Garden*

Arkana Laboratories  
Carolina Friends School  
Margaret and Gary Clark  
Duke University Energy Initiative  
Tom Hadzor and Susan Ross  
Tammy Havener  
Page and Dolph Hayden  
Daniel J. Kenan  
Thomas S. Kenan  
Gladys and Allen Langlois  
Jake Leonard  
Regan and Tonia Linke  
Carol Lutz  
Paul and Deborah Manus  
David J. Pickup, *for Botanical  
Garden Conservation Fund*  
Sue Mazer and Gary Powers  
Nidia Messias  
Brian C. Murray  
Andrea Piddington  
Planned Parenthood  
South Atlantic  
Cherie Rosemond  
Maria R. Servedio  
Braden Welborn  
Robin L. Wilson

**Fred O. Kiger**

Freddie Kiger, *for Battle Park  
Endowment*

**Dorothy Hart King**

Marina and Wade Barber

**Lucartha Donges Kohler**

Stephen Keith and Lisa Glover

**Jack Ralph Lamm**

Susan and Allan Eure,  
*for Conservation Fund*

**Marguerite MacIntyre**

Charlotte Jones-Roe

**Dolores Magenheim**

Marty Magenheim,  
*for Friends of UNC Herbarium*

**Bet and Sandy McClamroch**

Charlotte Jones-Roe

**Sam McCleskey**

Charlotte Jones-Roe  
and Chuck Roe

**Kathryn Charles McCoy**

Charlotte Jones-Roe  
and Chuck Roe

**Richard D. McCulloch**

Karen L. McCulloch

**Scott “Scotty” McLean Jr.**

*For Battle Park Endowment*  
Gerry Barrett  
Stephen Keith and Lisa Glover  
Edward M. Scott  
Jencie Stewart  
Amos and Beverly Tyndall  
Paul M. Vernon

**Carver Edward Meyer**

Terry and Shai Tamari,  
*for Conservation Fund*

**Carol Lasher Miller**

*For Living Plant Fund*  
Clay Miller  
Cyrus L. Miller  
Anne D. Varley

**Judith A. Miller**

Brenda W. Ashe,  
*for Living Plant Fund*

**Amie Modigh**

Sandra L. Venegoni

**Charlotte Moore**

Flo and Joe Chaffin

**Glenn Alexander Morris Jr.**

June K. Foushee, *for Mason Farm  
Biological Endowment*

**Marguerite Pearson Morrow**

Jeffery S. Beam and Stanley G.  
Finch, *for Coker Arboretum  
Endowment and Educational  
Outreach*

**Kirk M. Mosely**

Ellen M. Andrews

**Katherine Bradley Mouzon**

Charlotte Jones-Roe

**Grover Elmer Murray**

Sally M. Murray, *for Coker  
Arboretum Endowment*

**Paul Nettesheim**

Barbara L. Nettesheim

**Shelia Nickerson**

Charlotte Jones-Roe

**Mildred Louise Nowell**

Barbara J. Nowell

**Arline Olsen**

Elise Olsen

**Oliver Orr**

Audrey J. Booth,  
*for Mason Farm Endowment*  
Charlotte Jones-Roe  
and Chuck Roe

**Carolyn Anne Owen**

Jim and Kathy Gallucci

**Athena Geanetos Parker**

Charlotte Jones-Roe

**The Reverend Mary Lowrey  
Peacock**

William C. Coker Garden Club  
Jane and Moyer Smith

**Louise Wilson Pearson**

Bob and Maggie Pearson

**The Honorable  
J. Dickson Phillips Jr.**

Julie M. Chappell

**Harold C. Pollard III**

Louise B. Pollard,  
*for Battle Park Endowment*

**Nancy Pruden**

Gerry Barrett,  
*for Battle Park Endowment*  
Jencie Stewart,  
*for Battle Park Endowment*  
Nancy Tolley

**Rebecca W. Quackenbush**

Joe Chaffin,  
*for Wonder Connection*

**Albert and Laurie Radford**

Jean and David Radford

**Albert E. Radford, Harry E.**

**Ahles and C. Ritchie Bell**  
“On the occasion of the 50th  
Anniversary of publication of  
“Flora of the Carolinas”  
John and Elizabeth Bozeman

**Alex Rashid**

Xuan L. Tang

**Susan Preston Resnik**

Bruce Androphy  
Dottie Bennett  
Jill R. Grant  
Kevyn Immerman  
Harry M. Jensen  
Sherry T. Jones,  
*for Children’s Wonder Garden*  
Arlon Kemple and Karen E. Long  
James Leshner and  
Eleanor Rutledge  
David B. Resnick

**Karsten A. Rist**

Carl and Lisa Rist

**Nancy Howes Robinson**

David Anderson and  
Anne Howes Anderson,  
*for Director’s Fund*  
Arrowpoint Capital  
Betsy Creech  
Jan and Jim Dean  
Arthur and Mignon DeBerry  
Marlene Dickson  
Allison Essen  
Mary Jo and Jim Fickle  
William and Sandra Hibberd  
Bo and Pat Howes,  
*for Director’s Fund*  
Betsy Howes-Bean and Chuck  
Bean, *for Director’s Fund*  
Charlotte Jones-Roe  
and Chuck Roe  
Stephen Keith and Lisa Glover  
Amy and John Kelso  
Rebecca Kieronski  
Paula LaPoint  
Deborah Mitchell  
Mary Norris and Pat Oglesby  
Terri Orsini  
Katherine M. Porier  
James and Lynda Robinson  
Margaret A. Rook  
Carol S. Rosenberg  
Linda W. Sears  
Sally K. Smith and Paul Wells  
Barbara R. Tepperman, *for the  
Herb Garden Endowment*  
Roberta and Douglas Tilden  
UNC Hospitals Volunteer  
Association, Gift Shop  
Volunteers  
Paul and Sally Wells  
Fran and Gary Whaley  
Wyndi S. White  
Dot Wilbur-Brooks

**Isaiah F. and Dorothy S. Roe**

Charlotte Jones-Roe  
and Chuck Roe

**Barbara Roth**

Charlotte Jones-Roe  
and Chuck Roe

**Marsha Schlander**

Joanne Custer, *for Carolina  
Campus Community Garden*

**Thomas A. Sharp**

Tyrrell C. Sharp

**Harry Sledge**

Marion Sledge, *for General  
Support, Educational Outreach,  
and the Horticulture Fund*

**Lisa Soong**

Martha A. Propst,  
*for Friends of UNC Herbarium*

**Larry and Connie Steed**

Jimmy and Kathy Hasty

**Pearson and Jean Stewart**

Barbara and Larry Rowan

**Barbara Stiles**

Lars G. Schoultz and Jane  
Volland, *for Battle Park  
Endowment*

**Barbara Stiles and  
Bernice Stiles Wade**

Charlotte Jones-Roe

**Josie Stipe**

Laurie J. Norman

**George Alan Stoudemire**

Sylvia S. Wallace,  
*for Wonder Connection*

**Nancy “Teeny” Stronach**

Charlotte Jones-Roe

**Louise Talley**

Jennette C. Skinner

**Louise and Banks Talley**

Charlotte Jones-Roe  
and Chuck Roe

**Margaret E. Taylor**

Nina G. Wallace

**David N. Thompson**

Charles and Patricia Thompson,  
*for Coker Arboretum  
Endowment*

**Martha B. Turner**

John M. Turner

**Bernice Stiles Wade**

*For Battle Park Intern Program*  
Frank and Joan Adler  
Anthony and Tricia Amitrano  
Charles and Jane Byrd  
Jewel L. Crawford  
Geraldine E. Day  
Jan and Jim Dean  
Arthur and Mignon DeBerry  
Sara P. Faccidomo,  
*for Battle Park Endowment*  
Deborah M. Hock  
Jean Holcomb  
Harriet T. Holderness  
Stephen L. Keith and Lisa  
C. Glover, *for Battle Park  
Endowment*

The Kilgore Family—Marge, John,  
Johnny, Sara and Megan  
Mildred and John Long  
James E. Luebchow  
Orange County Extension and  
Community Association  
Josie Patton  
Martha and Wilborn Roberson  
Barbara G. Schliebe  
Becky and Robbie Smith  
Jack and Nancy Tomkovich  
Bob and Susan Williams

**Mary Louise Waitt**

Carey and Billie Durham  
Charlotte A. Jones-Roe  
and Chuck Roe  
North Carolina Botanical  
Garden Staff  
Patti Smith

**Jane Carter Walker**

Richard I. Walker

**Margaret Westmoreland**

Joe and Ramona Westmoreland,  
*for Children’s Wonder Garden*

**Lloyd Milton Whaley**

Roberta and Douglas Tilden

**Anne Louise Dutton Wharton**

Elizabeth A. Dutton,  
*for Wonder Connection*

**David Whittington**

Kate and Peter Enchelmayr,  
*for Battle Park Endowment*

**Kemp Winstead**

Henry G. Grossberg,  
*for Battle Park Endowment*

**Richard Harden Ziglar**

Mary Clara Capel, *for Battle  
Park Expendable and Coker  
Arboretum Improvement Fund*

**Charles Zimmerli**

Jeanne P. Duggan

*Thank you all for choosing  
to honor friends and family  
through a gift to the North  
Carolina Botanical Garden.*

**LEAVE A LEGACY**

**If you would like to speak  
with someone about making  
a special gift to the Garden,  
call Stephen Keith at  
919-843-2411 or UNC’s gift  
planning experts at  
800-994-8803.**



**North Carolina Botanical Garden**

The University of North Carolina

Campus Box 3375

Chapel Hill, NC 27599-3375

Phone: 919-962-0522

[ncbg.unc.edu](http://ncbg.unc.edu) · [ncbg@unc.edu](mailto:ncbg@unc.edu)